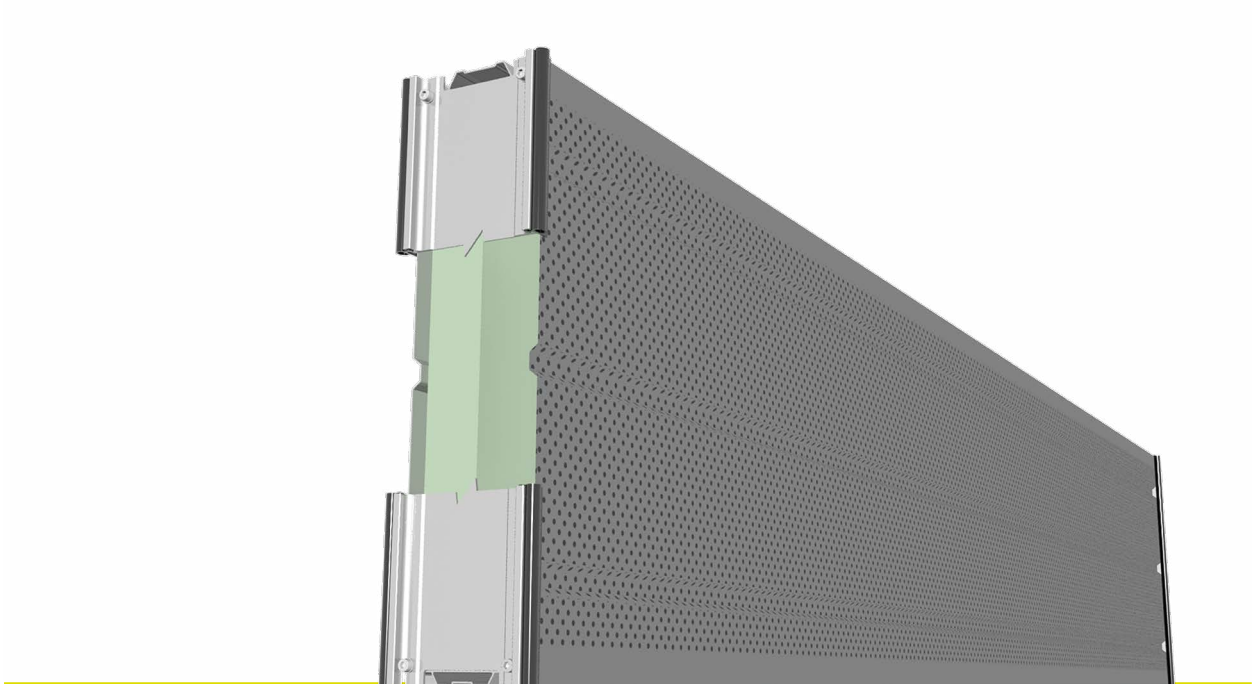


Railway element Type A3-e (DB-88)

Aluminium sound panels
single-sided highly absorbent



Sound absorption

DIN EN 1793-1: DL_A
9 dB = A3

Airborne sound insulation

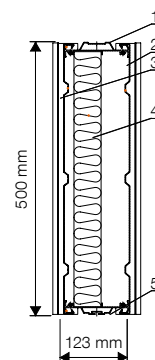
DIN EN ISO 140-3: R_w
30 dB

DIN EN 1793-2: DL_R
25 dB = B3

TECHNICAL DATA

L = (mm)	m = (kg/piece)
Standard lengths	
1.95	19.00
2.45	24.00
2.95	28.00
3.95	38.00
4.95	47.00
$\varnothing \approx$	19.00 (kg/m²)

Special lengths / heights possible



- 1 Upper Profile
- 2 Side Sheet, Perforated
- 3 Side Sheet, Non-Perforated
- 4 Mineral Wool
- 5 Lower Profile

Design and dimensioning according to RiL 804.5501

EBA approval number:

213.3-213izbia/007-2101#007-(007/23-ZUL)

Standard installation in posts of the HE series 160 - 220

HPQ according to TL 8890007 (DBS 918007)

valid until 21 January 2028