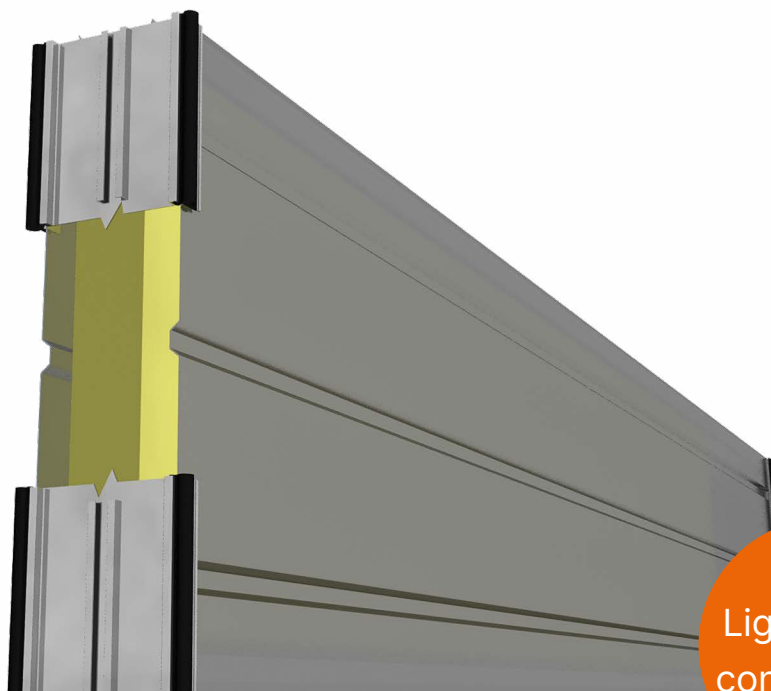


Road element Type A3.1-r

Aluminium sound panels

reflective, anti-glare and privacy protection



Lightweight
construction

Airborne sound insulation

DIN EN ISO 140-3: R_w **30.0 dB**

DIN EN 1793-2: DL_R **25.0 dB**

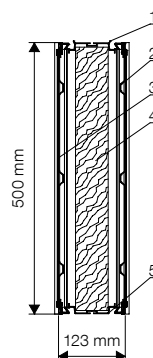
DIN EN 1793-6: DL_{SI} **33.0 dB**

(determined by comparative calculation)

TECHNICAL DATA

L = (mm)	m = (kg/piece)
Standard lengths	
1.96	14.59
2.46	18.06
2.96	21.52
3.96	28.46
4.96	35.39
5.96	42.33
$\varnothing \approx$	14.87 (kg/m²)

Special lengths / heights possible



- 1 Upper Profile
- 2 Side Sheet, Non-Perforated
- 3 Side Sheet, Non-Perforated
- 4 Mineral Wool
- 5 Lower Profile

Design and dimensioning according to ZTV-LSW 22

Standard installation in posts of the HE series 160 - 300

Proof of mechanical properties in accordance with LGA – type statics