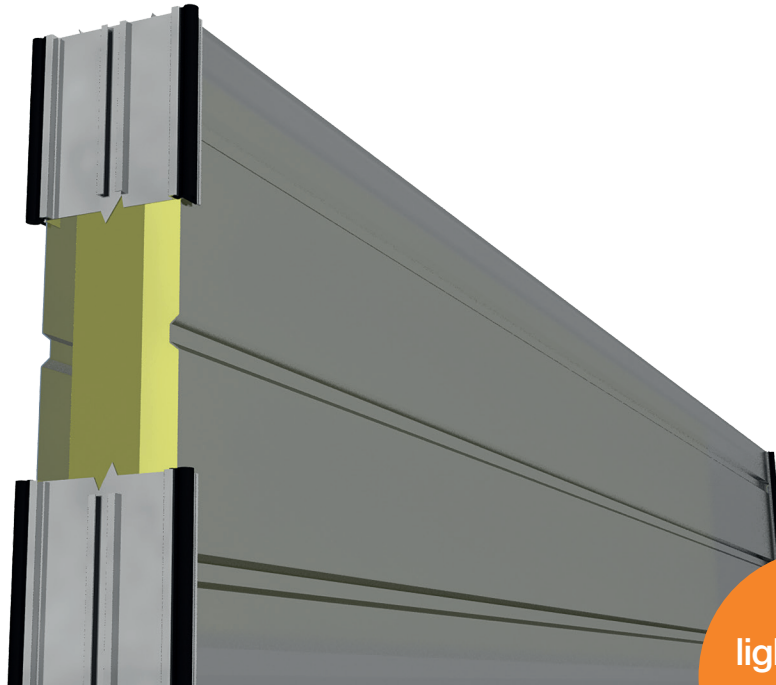


# Road element Type A3.1-r

## Aluminium sound panels

glare and sight protection reflective



lightweight  
construction

### Airborne sound insulation

DIN EN ISO 140-3:  $R'_w$

**30 dB**

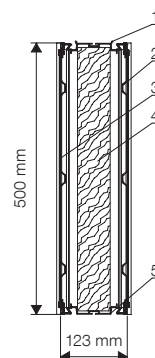
DIN EN 1793-2:  $DL_R$

**25 dB = B3**

### TECHNICAL DATA

L = (mm)	m = (kg/piece)
Standard lengths	
1.95	14.59
2.45	18.06
2.95	21.52
3.95	28.46
4.95	35.39
Ø ≈	14.87 (kg/m <sup>2</sup> )

Special lengths / heights possible



- 1 Upper Profile
- 2 Side Sheet, Non-Perforated
- 3 Side Sheet, Non-Perforated
- 4 Mineral Wool
- 5 Lower Profile

Design and dimensions according to ZTV-Lsw 06  
Standard mounting with HE\_series 160 - 300 posts