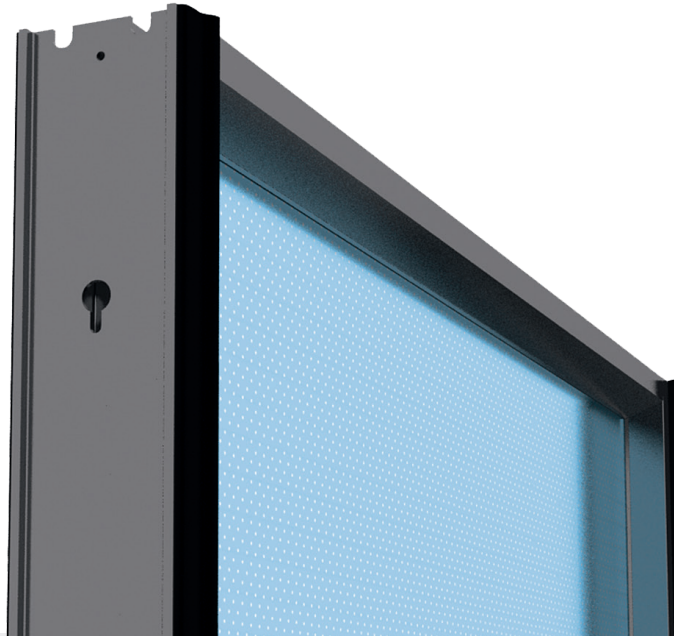


# Transparent element Type T15

with aluminium frame



## Airborne sound insulation

DIN EN ISO 140-3:  $R'_w$

**33 dB**

DIN EN 1793-2:  $DL_R$

**31 dB = B3**

## TECHNICAL DATA

L = (mm)	m = (kg/piece)	
<b>(H=1000 mm)</b>	<b>S=20</b>	<b>S=15</b>
Standard lengths		
1.95	76.00	66.00
2.45	93.00	83.00
2.95	110.0	99.00
3.95	144.0	133.0
4.95	178.0	167.0
$\varnothing \approx$	37.00 (kg/m <sup>2</sup> )	32.00 (kg/m <sup>2</sup> )

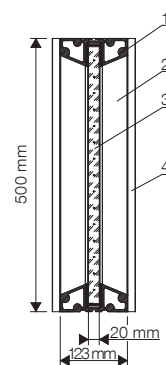
Special lengths / heights possible

Design and dimensions according to RiL 804.5501

EBA homologation numbers:

**21.51-21izbia/021-2101 # 007-(010/14-ZUL)**

Standard mounting with HE\_series 160 - 240 posts



- 1 Horizontal profile
- 2 Vertical profile
- 3 Acrylic glass plate (transparent)
- 4 EPDM seal